

紅梅



40-174



41-174



42-174

勝



43-173

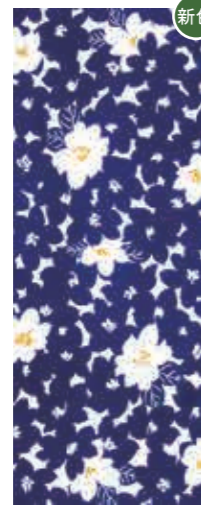


44-174

勝



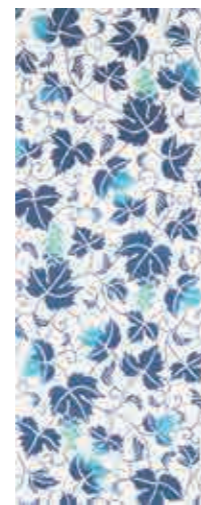
45-171



46-171



47



48



49



50



51



52



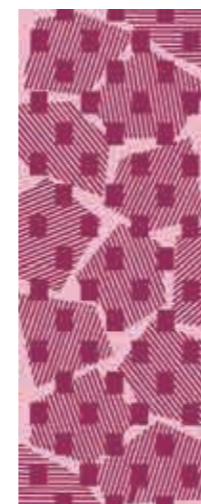
53



54



55



56

紅梅



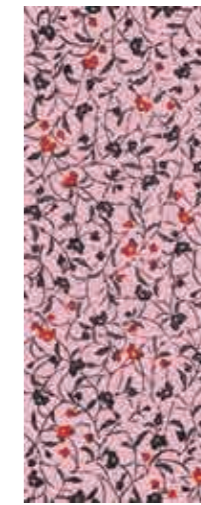
57



58



59



60



61

特岡キング



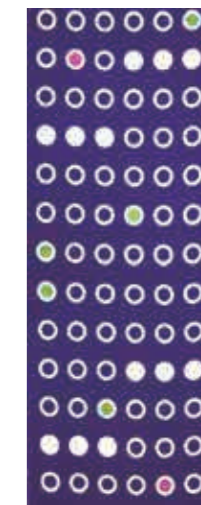
62



63



64



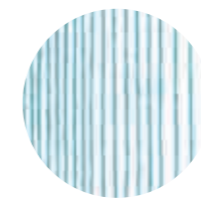
65

綿縮緬

【東京型友禅】



70



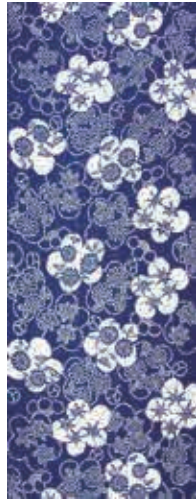
東京型友禅

東京23区内に唯一  
一軒残る友禅工房で  
手染めしております

涼 (透け感のある涼しげな生地です) ● 新作



80



81



83



84

